



Idea: TORCIA handlamp 120V white

16449.B

Idea / Devices / Emergency lighting fittings

TORCIA handlamp 120V white

TORCIA, electronic hand lamp with high-efficiency LED, supply voltage 120 V~ 50-60 Hz, automatic emergency device, rechargeable and replaceable Ni-MH battery, 2 hours of operating range, \varnothing 4 mm pins, 19 mm distance between centres + charging socket outlet, white - 2 modules

Product Status

2 - Will be discontinued

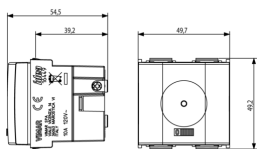
Minimum order quantity

10 NR

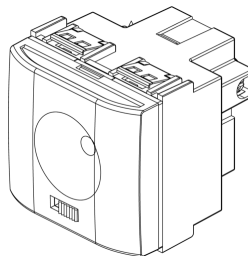
Sheets, Manuals, Documentation

- [Multilanguage instructions sheet \(484 kb\)](#)

Drawings



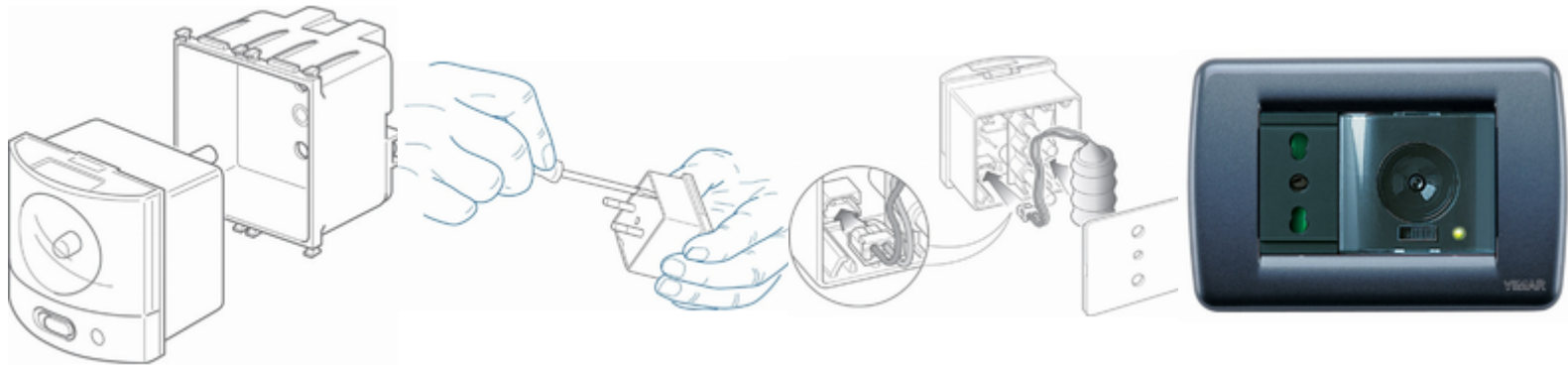
Space view



3D View



Gallery



Technical data

- **Class group:** Luminaires
- **Class:** Emergency luminaire
- **Mounting method:** Built-in
- **Monitoring equipment:** None
- **Wiring system:** Standby switching
- **With remote switch connection:** No
- **Power supply system:** Peripheral (individual battery)
- **Battery quality:** NiMH
- **Lamp type:** LED not exchangeable
- **With light source:** Yes
- **Material housing:** Plastic
- **Colour housing:** White
- **Material cover:** Without cover
- **Voltage type:** AC
- **Nominal voltage:** 120,00 - 120,01 v
- **Degree of protection (IP):** IP40
- **Protection class:** II
- **Max. system power:** 1,00 W
- **Width:** 49,70 mm
- **Height/depth:** 50,10 mm
- **Built-in width:** 49,70 mm
- **Built-in height/depth:** 39,20 mm

Certifications

- 00. CE Marking - EU
- 10. EAC Eurasian Customs Union
- 37. Marking - Morocco
- 43. UKCA mark - Great Britain
- 96. Electrotechnical expert ([download](#))
- 99. WEEE Directive ([download](#))

Packaging



Code 8007352146600
Quantity 1 NR
Dim. 6x5.4x5.3 [cm]
Weight 93.6 [g]



Code 8007352146617
Quantity 10 NR
Dim. 28.1x13.1x6 [cm]
Weight 1,025.07 [g]

Legal

Vimar reserves the right to change at any time and without notice the characteristics of the products reported. Installation should be carried out by qualified staff in compliance with the current regulations regarding the installation of electrical equipment in the country where the products are installed. For the terms of use of the information on the product info sheet see [Conditions of Use](#).