



## Idea: TORCIA hand lamp 120V grey

**16449**

Idea / Devices / Emergency lighting fittings

### TORCIA hand lamp 120V grey

TORCIA, electronic hand lamp with high-efficiency LED, supply voltage 120 V~ 50-60 Hz, automatic emergency device, replaceable rechargeable Ni-MH battery, 2 hours of operating,  $\varnothing$  4 mm pins, 19 mm distance between centres + charging socket outlet, grey - 2 modules

### Product Status

2 - Will be discontinued

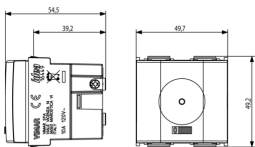
### Minimum order quantity

10 NR

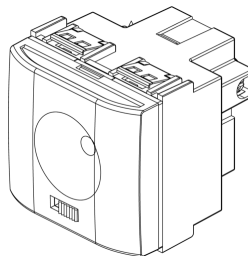
### Sheets, Manuals, Documentation

- [Multilanguage instructions sheet \(484 kb\)](#)

### Drawings



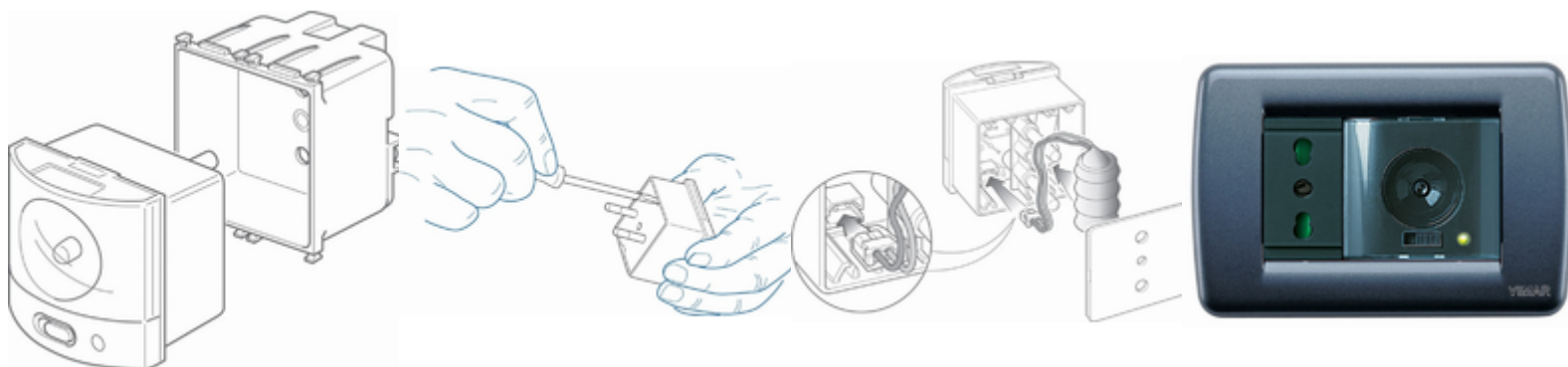
Space view



3D View



## Gallery



## Technical data

- **Class group:** Luminaires
- **Class:** Emergency luminaire
- **Mounting method:** Built-in
- **Monitoring equipment:** None
- **Wiring system:** Standby switching
- **With remote switch connection:** No
- **Power supply system:** Peripheral (individual battery)
- **Battery quality:** NiMH
- **Lamp type:** LED not exchangeable
- **With light source:** Yes
- **Material housing:** Plastic
- **Colour housing:** Grey
- **Material cover:** Without cover
- **Voltage type:** AC
- **Nominal voltage:** 120,00 - 120,01 v
- **Degree of protection (IP):** IP40
- **Protection class:** II
- **Max. system power:** 1,00 W
- **Width:** 49,70 mm
- **Height/depth:** 50,10 mm
- **Built-in width:** 49,70 mm
- **Built-in height/depth:** 39,20 mm

## Certifications

- 00. CE Marking - EU
- 10. EAC Eurasian Customs Union
- 37. Marking - Morocco
- 43. UKCA mark - Great Britain
- 96. Electrotechnical expert ([download](#))
- 99. WEEE Directive ([download](#))

## Packaging



**Code** 8007352146587  
**Quantity** 1 NR  
**Dim.** 6x5.4x5.3 [cm]  
**Weight** 93.73 [g]



**Code** 8007352146594  
**Quantity** 10 NR  
**Dim.** 28.1x13.1x6 [cm]  
**Weight** 1,015.6 [g]

## Legal

Vimar reserves the right to change at any time and without notice the characteristics of the products reported. Installation should be carried out by qualified staff in compliance with the current regulations regarding the installation of electrical equipment in the country where the products are installed. For the terms of use of the information on the product info sheet see [Conditions of Use](#).