



## Eikon: Table mounting box 7M grey

**20787**

Eikon / Mounting boxes / Table mounting

### Table mounting box 7M grey

7-module table mounting box, grey. To complete with mounting frame and cover plate

#### Product Status

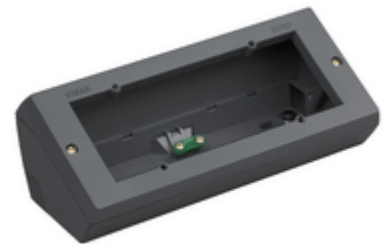
3 - Active

#### Minimum order quantity

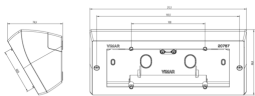
2 NR

#### Sheets, Manuals, Documentation

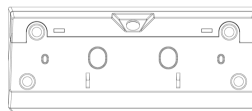
- [Multilanguage instructions sheet \(724 kb\)](#)



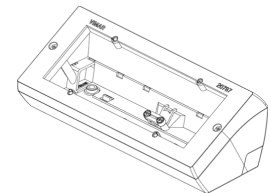
## Drawings



Space view



Backside view



3D View

## Technical data

- **Class group:** Domestic switching devices
- **Class:** Surface mounted housing for flush mounted switching device
- **Assembly arrangement:** Other
- **Suitable for modular domestic switching devices:** Yes
- **Number of modules (module system):** 7
- **Number of units:** 7
- **Mounting direction:** Horizontal
- **Material:** Plastic
- **Material quality:** Other
- **Halogen free:** Yes
- **Surface protection:** Untreated
- **Surface finishing:** Matt
- **Colour:** Grey
- **RAL-number (similar):** 7024
- **Transparent:** No
- **With cover frame:** No
- **With duct entry:** No
- **With cable entry:** Yes
- **With screw gland entry:** No
- **Shock resistant:** Yes
- **Degree of protection (IP):** IP20
- **Width of device:** 206,00 mm
- **Height of device:** 80,00 mm
- **Depth of device:** 67,60 mm

## Certifications

- 01. IMQ - Italy ([download](#))
- 96. Electrotechnical expert ([download](#))

## Packaging



**Code** 8007352265080  
**Quantity** 1 NR  
**Dim.** 21.2x8.9x7.5 [cm]  
**Weight** 231.07 [g]

**Code** 8007352265097  
**Quantity** 2 NR  
**Dim.** 24.4x13.9x10.1 [cm]  
**Weight** 547.13 [g]

## Legal

Vimar reserves the right to change at any time and without notice the characteristics of the products reported. Installation should be carried out by qualified staff in compliance with the current regulations regarding the installation of electrical equipment in the country where the products are installed. For the terms of use of the information on the product info sheet see [Conditions of Use](#).